



PUTTING THE FUN BACK
INTO LEARNING!

February 2017

Dear Parents,

Thank you to those of you who were able to attend the *Meet and Greet Event* last week. We hope you found it informative and that any questions you had were answered. Please work on the new targets that were provided by the teacher for Maths, English and Science. If you have any concerns or issues, please feel free to email us:

3AS (3A) – Ms. Ashley	ashley@albasmaschool.ae
3SA (3B) – Ms. Saima	saima@albasmaschool.ae
3SAS (3C) – Mr. Sasha	sasha.g@albasmaschool.ae
3YV (3E) – Ms. Yvonne	yvonne.k@albasmaschool.ae
3LO (3F) – Mr. Louis	louis.t@albasmaschool.ae
3AM (3G) – Ms. Amna	amna.s@albasmaschool.ae
3PE (3H) – Mr. Peter	peter.s@albasmaschool.ae

Curriculum

English

In English this month, we are learning about persuasive writing. Children will look at key features and language used in persuasive texts. Children will then write their own persuasive letter or email using the features learnt. We will then move on to report writing and will look at key features within the text such as title, paragraphs, facts, diagrams or pictures. Children will then write their own report.

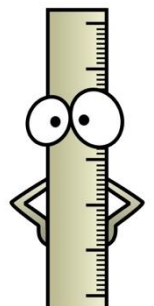
http://www.bbc.co.uk/bitesize/ks3/english/writing/argue_persuade_advise/revision/3/

<http://www.bbc.co.uk/bitesize/ks2/english/writing/reports/read/1/>

Maths

In Maths this month we are learning about multiplication and division facts and measurement using length. Children will have the opportunity to use a ruler or metre stick to measure smaller or larger objects. They will then compare lengths using $<$ or $>$ and they will learn how to add and subtract length.

http://mathszone.net/mw/ruler/ruler_cm.swf



Science

This month in Science we will be identifying basic parts of the digestive system and explaining the functions of each part. Children will investigate the journey of food through the body carrying out an experiment. Through this, children will be able to explain the process in which the food goes through the digestive system.

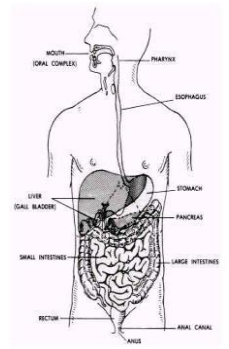


Figure 6-1. The human digestive system.

Topic



This month in topic, children will be learning about the rich and poor Tudors, the jobs that they had and they will compare Tudor times with modern times. They will also look at Tudor houses and artefacts.

<http://www.primaryhomeworkhelp.co.uk/Tudors.html>

Bug Club

Please ensure that your child reads to you every night. Use the comprehension questions at the beginning of the book and at the end to check your child's understanding. If your child has completed their books, then please inform the teacher to allocate more books.



Stationery

Please ensure your child has the correct stationery in school. All children should have a **labelled** pencil, eraser, ruler and in particular, a glue stick and board pen in their pencil case at all times. Their learning is being affected by not having these items in school.

Uniform

Please ensure your child is in the correct uniform for school. If you are unsure, please refer to the policy '*Student uniform*' found on the school website under policies. Thank you for your support ☺

Attendance and Punctuality

All children should attend school as frequently as possible. Every absence has an impact on the continuity of their learning and therefore their progress. It is extremely important that children are in school at 7.50am for the National Anthem so that they do not miss any learning when lessons start at 8am.

Kind regards,

The Grade 3 team.